



## Easy Setup

## Prolon Cloud Communication

### BEFORE GETTING STARTED

- Although not required, it is highly recommended to have a PL-485-BT converter handy in case a direct connection must be made.
- To enable the cloud communication, there must be an internet connection available to:
  - The computer via Wifi or network cable.
  - The PL-NC2000 Network Controller via network cable.

**STEPS 1 & 2 are required if the existing PL-NC2000 Network Controller is not 7.1 or higher. If the PL-NC2000 is already 7.1 or higher, PROCEED TO STEP 3.**

- 1 Install or update the Prolon Focus software to Focus 7.1 or higher. ([www.proloncontrols.com](http://www.proloncontrols.com))
- 2 Locate Network Controller firmware file (BIN file)
  - Ensure that the BIN file is located in the Prolon Controls folder.
  - File path on desktop: C:\ProLon\Focus v.7.1.0\NC2000\_V710\_ISP.bin
  - The BIN file can also be downloaded from Prolon's FTP site: [Click here to download.](#)
- 3 Update the PL-NC2000 Network Controller firmware to Version 7.1 or higher (Figure 1-2)
  - Connect to PL-NC2000 Network Controller via serial or TCP/IP
  - Double-click the Network Controller icon
  - Config → Device
  - Press on "Reprogram" button
  - Select the BIN file from Step 2, and press on "Start" button to update the Network Controller.
- 4 Set Network Controller IP Settings (Figure 3)
  - Connect to PL-NC2000 Network Controller via USB, serial or TCP/IP
  - Double-click the Network Controller icon
  - Config → Communication
  - Ensure the "Allow Cloud Communication" box is checked
  - Set the IP mode to DHCP – OR – Static IP + enter valid Local Area Network settings (IP Address, Subnet Mask, Default Gateway)
  - Press Apply
  - Reset the PL-NC2000 Network Controller (Config → Device → "Reset" button)

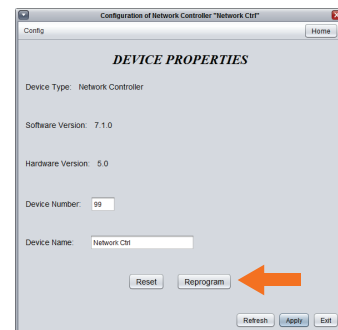


Figure 1

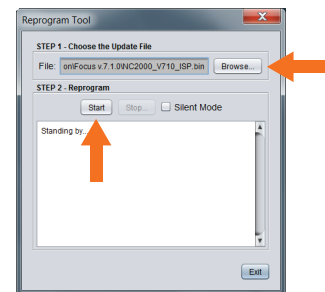


Figure 2

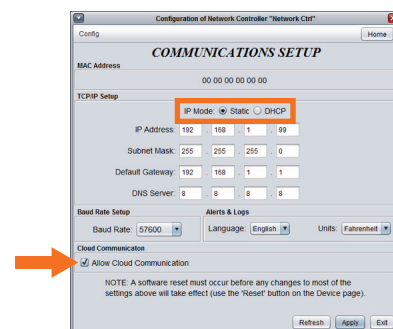


Figure 3



- 5 Retrieve NCID (Figure 4-5)
  - Connect to PL-NC2000 Network Controller via USB, serial or TCP/IP
  - Right-click the Network Controller icon
  - Select "View NCID"
  - Select "Copy to Clipboard"
  
- 6 Disconnect communication with the PL-NC2000 Network Controller
  - Click on the "Disconnect" button in the Connection side panel
  
- 7 Claim the PL-NC2000 Network Controller (Figure 6-7)
  - Access Connection menu:  
Project → Setup → Connection tab
  - Select Type: "Cloud"
  - Below, click on "Claim NC"
  - Right click and "Paste" NCID. Press "Claim" button.
  - Click on Save
  - Click on the "Connect" button in the Connection side panel
  
- 8 Confirmation Cloud communication is active (Figure 8)
  - Upon clicking on the "Connect" button, a green checkmark will appear thus confirming the communication is now active.

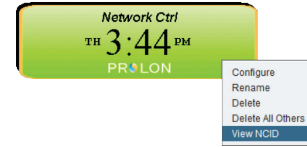


Figure 4

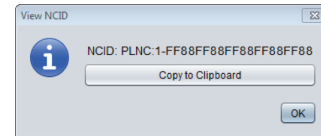


Figure 5

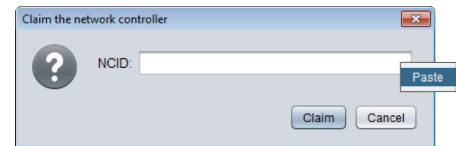


Figure 6

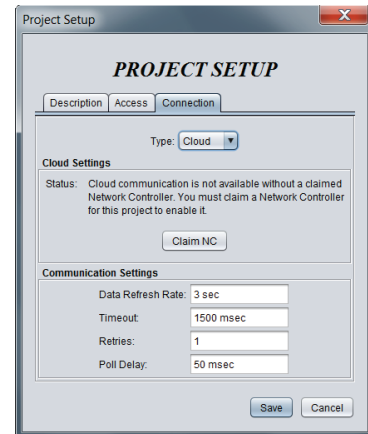


Figure 7

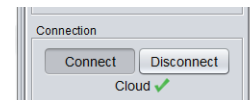


Figure 8